

COVID-19 RISK ASSESSMENT

CHURCH NAME: **Streatham Central Church**

Activity: **Sunday Morning Gathering at Henry Cavendish School**

Description (including assumptions made for risk assessment): Resuming Sunday services with controls for social distancing in line with these guidelines on the government website: <https://www.gov.uk/government/publications/covid-19-guidance-for-the-safe-use-of-places-of-worship-during-the-pandemic-from-4-july/covid-19-guidance-for-the-safe-use-of-places-of-worship-during-the-pandemic-from-4-july>

Assessment date: 16/10/2020

New review due: 22/10/2020

Assessor(s): Penny Duckworth

Reviewer(s): Andy Bushell & Penny Osbourne

Hazard category	Ref.	Hazard description	Who might be harmed	Existing controls	Acceptable (Y/N)	Further actions			
						Description	Owner	Target date	Done
Infected person attending event	1	Person infected with COVID-19 attends event, risking infection of others	Attendees	Group reminded to follow government guidance to self-isolate if displaying symptoms (high temperature, continuous cough, lost / altered sense of taste / smell) Anyone taken ill with COVID-19 symptoms during event to be sent home and advised to follow government advice and seek a test	Y	Remind attendees at the beginning of each service to follow government guidelines	Penny Duckworth	06/10/2020	
Physical contact between persons	2	Transmission of COVID-19 through direct physical contact with an infected person	Attendees	Direct contact will be avoided through social distancing. On arrival people will be reminded to adhere to the 2 metre rule at all times, even when moving between places and leaving.	Y		Jim Dawton	06/10/2020	
Airborne transmission	3	Transmission of COVID-19 through the air	Attendees	The service will be conducted outdoors, except for when it is raining. Each week it will be decided 2-days ahead and communication will be sent out accordingly. During wet days the service will be conducted in a well-ventilated hall. There will be no congregational singing. Any projection or singing done from the front will be done at a distance greater than 2 metres from the front row of worshipers. Shouting and raised voices of all worshipers will be discouraged	Y		Jim Dawton	06/10/2020	
Airborne transmission	4	Transmission of COVID-19 through the air	Attendees	In all parts of the flow of worshipers there is enough distance to allow a 2 metre distance even while passing i.e no pinch points or high traffic areas (see map). There are some pinch points to be managed in the childrens activity areas, please see the kids gatherings tab for details of assessed risk in these circumstances. Sensible hygiene to be observed (covering mouth and nose when sneezing, using tissues and disposing immediately) Attendees advised to bring hand sanitiser and use after touching face / before eating.	Y	All guidelines explain via email and at the beginning of each service. Attendees may need to be reminded by the host and hospitality team during the service to not raise voices if conversation or participation starts to get too loud and to maintain social distancing both indoors and outdoors	Penny Duckworth	06/10/2020	
Airborne transmission	4b	Transmission of COVID-19 through the air	Attendees	Attendees may wish to wear face coverings outdoors. Attendees will be required to wear face coverings for the duration of the meeting when we choose to meet indoors.			Penny Duckworth	06/10/2020	
Surface transmission	5	Transmission of COVID-19 through shared toilet facilities	Attendees	Cleaning equipment will be provided for people to clean after using toilet and sink surfaces that are touched. All toilets will be cleaned thoroughly before and after the service by Henry Cavendish contracted cleaners	Y		Penny Duckworth	06/10/2020	

Hazard category	Ref.	Hazard description	Who might be harmed	Existing controls	Acceptable (Y/N)	Further actions			
						Description	Owner	Target date	Done
Surface transmission	6	Transmission of COVID-19 through shared surfaces	Attendees	Gates and doors will be propped open where possible. Surfaces will be kept to a minimum - only chairs used, no tables, although most attendees will be encouraged to stand as it is a shorter service. Henry Cavendish school are providing their own cleaners who will pay special attention to cleaning the facilities and equipment used by SCC before and after the service	Y		Jim Dawton	06/10/2020	
Surface transmission	7	Transmission of COVID-19 through shared objects	Attendees	Attendees advised to bring hand sanitiser and use after touching face / before eating No shared objects as part of event Personal items to be kept with their owners Sensible hygiene to be observed (covering mouth and nose when sneezing, using tissues and disposing immediately)	Y		Penny Duckworth	06/10/2020	
Surface transmission	8	Transmission of COVID-19 through shared food	Attendees	Attendees advised to bring their own food and not to share within their households/bubbles.	Y		Penny Duckworth	06/10/2020	
Surface transmission	8	Transmission of COVID-19 through shared food	Attendees	The Lord's Supper will be prepared by 1 or 2 volunteers, they will be wearing face coverings and pouring and cutting individual portions using sanitised or gloved hands. The portions will be prepared in advance and covered or prepared immediately before use. They will be served on a large clean surface or trays so worshipers can pick-up their own portion without touching other portions. No talking will be allowed over the table and those serving must not hand portions to the worshipers directly.		Attendees will be notified of the new way of doing the Lord's Supper before church in an email and at the beginning of the meeting	Penny Duckworth	06/10/2020	
Transmission to the clinically vulnerable	9	Transmission of COVID-19 to those who are clinically vulnerable	Clinically vulnerable attendees	Group reminded to follow government guidance if in high-risk / shielding categories (up to individuals to choose how to manage their own risk) and attend online zoom service instead. High-risk volunteers not enlisted to run event	Y		Penny Duckworth	06/10/2020	
Wider outbreak in community	10	COVID-19 case at event leads to potential wider outbreak in the community	Attendees and wider community	List of attendees kept to enable Track and Trace Record to be kept for 21 days after event	Y	Using our secure g-suite documents to keep a record of regulars and any visitors. Notifying all regulars via email of this procedure.	Penny Duckworth	06/10/2020	
Wider outbreak in community	11	Local outbreak of COVID-19 raises baseline level of exposure at event	Attendees and wider community	Event to be cancelled in line with local guidance if required and return to only running Zoom church	Y		Penny Duckworth	06/10/2020	
Operational issues	12	Key personnel become unavailable due to need to self-isolate	Attendees and all church family	for every operational role, more that one individual is trained to perform it, this allows for key personnel to be relieved of duties due to sickness or self-isolation	Y		Jim Dawton	06/10/2020	
Operational issues	13	Outbreak within the church forces cessation of resumed activities	Attendees and all church family	Event to be cancelled in line with local guidance if required and return to only running Zoom church	Y		Penny Duckworth	06/10/2020	

COVID-19 RISK ASSESSMENT
CHURCH NAME: Streatham Central Church

Activity: Kids Gatherings at Henry Cavendish School

Description (including assumptions made for risk assessment): In line with the government guidelines for out of home childcare we are creating a younger and older 'bubble' and running kids groups during the Sunday gathering. These are the guidelines followed: <https://www.gov.uk/government/publications/protective-measures-for-holiday-or-after-school-clubs-and-other-out-of-school-settings-for-children-during-the-coronavirus-covid-19-outbreak/protective-measures-for-out-of-school-settings-during-the-coronavirus-covid-19-outbreak> and <https://www.gov.uk/government/publications/coronavirus-covid-19-early-years-and-childcare-closures/coronavirus-covid-19-early-years-and-childcare-closures>
Assessment date: 16/10/2020

New review due: 22/10/2020

Assessor(s): Penny Duckworth

Reviewer(s): Lucy Lyell & Penny Osbourne

Hazard category	Ref.	Hazard description	Who might be harmed	Existing controls	Acceptable (Y/N)	Further actions			
						Description	Owner	Target date	Done
Infected person attending event	1	Child infected with COVID-19 attends event, risking infection of others	Attendees	Parents reminded to follow government guidance to self-isolate if their child is displaying symptoms (high temperature, continuous cough, lost / altered sense of taste / smell) Anyone taken ill with COVID-19 symptoms during event to be sent home and advised to follow government advice and seek a test	Y	Remind attendees before in email and at the beginning of each service to follow government guidelines	Penny Duckworth	03/08/2020	
Physical contact between persons	2	Transmission of COVID-19 through direct physical contact with an infected person	Attendees	Children will be asked to line up and leave the gathering without their parents. Exit will be staggered to avoid overcrowding, the older ones lining up and leaving 5 minutes before the younger ones. On pick up, parents will be able to socially distance using the outdoor access to the rooms, following the one-way flow out of the school and exiting to avoid mingling	Y		Jim Dawton	29/09/2020	
Physical contact between persons	2	Transmission of COVID-19 through direct physical contact with an infected child	Attendees	Children will be kept in bubbles of 15 in two groups during their distinct activities. Before these activities parents will be reminded to keep their children with them. Volunteers are on a 3 week rotation to minimise risk.	Y		Penny Duckworth	03/08/2020	
Airborne transmission	3	Transmission of COVID-19 through the air	Attendees	Ventilation and some time spent outdoors. The activity will be shorter than usual 20-35 minutes in total including time spent outside.	Y	Children will be encouraged to spend the majority of the time outdoors where possible	Penny Duckworth	03/08/2020	
Airborne transmission	4	Transmission of COVID-19 through the air	Attendees	The classroom for the older children has been prepared in a covid-19 secure way by Henry Cavendish school. Children will be encouraged to sit with their siblings on the distanced tables and not share equipment The smaller children will be in a well ventilated larger room with furniture moved to the side. Volunteers are advised to remain 2 metres distance from other volunteers and may wear face coverings if they wish.	Y		Penny Duckworth	03/08/2020	
Surface transmission	5	Transmission of COVID-19 through shared toilet facilities	Attendees	Each group will have their own allocated toilets not used by any other group and their is handwashing facilities in both rooms for regular hand washing of adult volunteers and children who are able All toilets will be cleaned thoroughly before and after the service by Henry Cavendish contracted cleaners. Access to the childrens toilets are through narrow corridors/doorways so a 1-in-1-out policy will be in operation for children (who are only allowed to go to the toilet with their parents in our current policy)	Y		Penny Duckworth	03/08/2020	

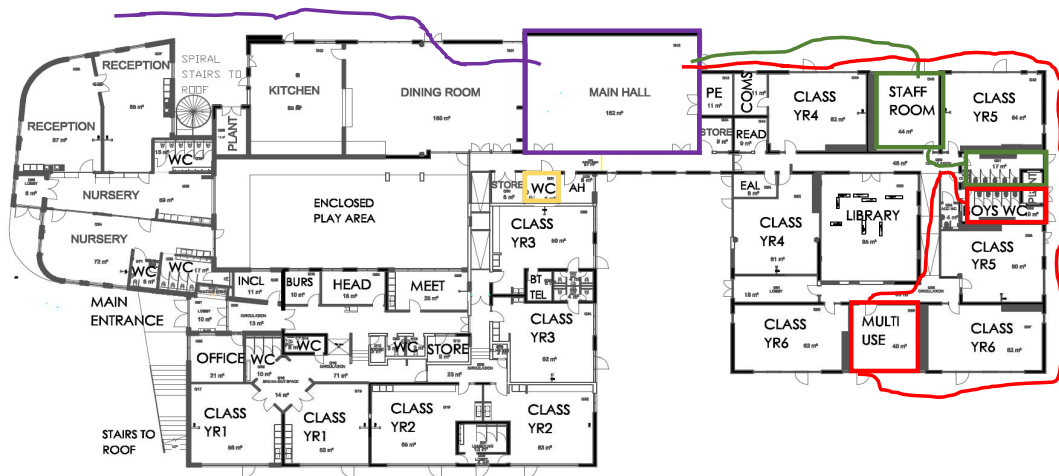
Hazard category	Ref.	Hazard description	Who might be harmed	Existing controls	Acceptable (Y/N)	Further actions			
						Description	Owner	Target date	Done
Surface transmission	6	Transmission of COVID-19 through shared surfaces	Attendees	Doors will be propped open. Surfaces will be kept to a minimum, cleaning products provided to wipe surfaces intermittently. Henry Cavendish school are providing their own cleaners who will pay special attention to cleaning the rooms/facilities used by SCC before and after the service	Y		Penny Duckworth	03/08/2020	
Surface transmission	7	Transmission of COVID-19 through shared objects	Attendees	For the older children there will be no shared objects and personal items such as water bottles are to be kept with their owners. Sensible hygiene to be observed (covering mouth and nose when sneezing, using tissues and disposing immediately).	Y		Penny Duckworth	03/08/2020	
Surface transmission	8	Transmission of COVID-19 through shared objects	Attendees	For the younger children we have followed government guidelines for early years settings and removed some shared toys that are harder to clean but have kept most toys available for them to use. These toys will only be used by this bubble and only once a week.	Y		Penny Duckworth	03/08/2020	
Surface transmission	9	Transmission of COVID-19 through shared food	Attendees	No food will be allowed in the kids gatherings	Y		Penny Duckworth	03/08/2020	
Transmission to the clinically vulnerable	10	Transmission of COVID-19 to those who are clinically vulnerable	Clinically vulnerable attendees	Parents reminded to follow government guidance if in high-risk / shielding categories (up to individuals to choose how to manage their own risk) and attend online zoom service instead. Volunteers who are clinically vulnerable will be omitted from rotas. Any volunteer who feels any risk may opt out of being added to the children's activity rota.	Y		Penny Duckworth	03/08/2020	
Wider outbreak in community	11	COVID-19 case at event leads to potential wider outbreak in the community	Attendees and wider community	List of attendees kept to enable Track and Trace. Record to be kept for 21 days after event	Y	Using ChurchSuite to keep a record of regulars and any visitors. Notifying all regulars via email of this procedure.	Penny Duckworth	03/08/2020	
Wider outbreak in community	12	Local outbreak of COVID-19 raises baseline level of exposure at event	Attendees and wider community	Event to be cancelled in line with local guidance if required and return to only running Zoom church and using emailed resources for parents	Y		Penny Duckworth	03/08/2020	
Operational issues	13	Key personnel become unavailable due to need to self-isolate	Attendees and all church family	written guidelines for all operational roles allows for key personnel to be relieved of duties	Y		Penny Duckworth	03/08/2020	
Operational issues	14	Outbreak within the church forces cessation of resumed activities	Attendees and all church family	Event to be cancelled in line with local guidance if required and return to only running Zoom church and using emailed resources for parents	Y		Penny Duckworth	03/08/2020	



- Main meeting entrance/exit path & location
- Adult toilet path & location
- Tots entrance/exit path (no parent drop off), location & toilet
- Kids entrance/exit path (no parent drop off), location & toilet

WHEN RAINING AND WE ARE INDOORS:

- Main meeting entrance/exit path & location
- Adult toilet path & location
- Tots entrance/exit path (no parent drop off), location & toilet
- Kids entrance/exit path (no parent drop off), location & toilet



[illegible]